



***Aggregations of spatial information
for statistical data dissemination***

Context

The Demographic Census has two questionnaires

1. Universe
2. Sample survey

Political-Administrative divisions of Brazil:

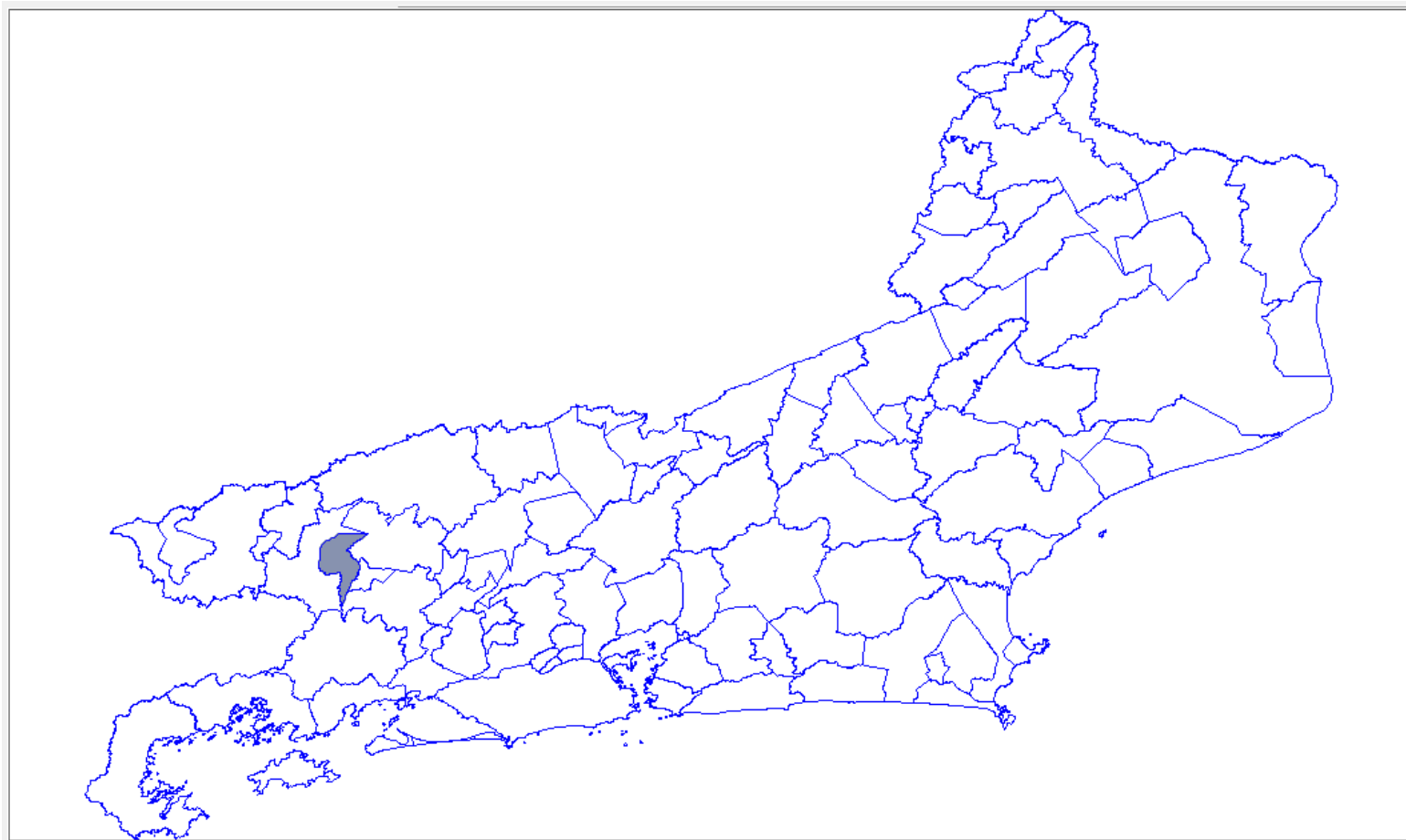
- 27 States
- 5565 municipalities

Introduction

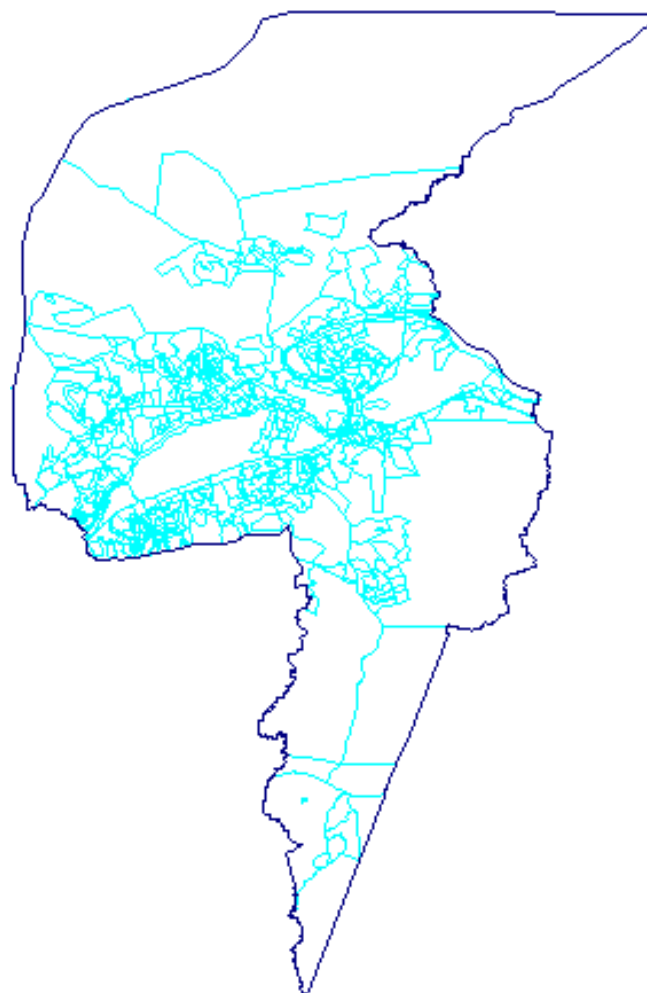
Some forms of aggregation of spatial information:

1. Enumeration area
(*Setores censitários*)
2. Weighting area
(*áreas de ponderação*)
3. Block-face
4. Statistical grids

Example: Volta Redonda



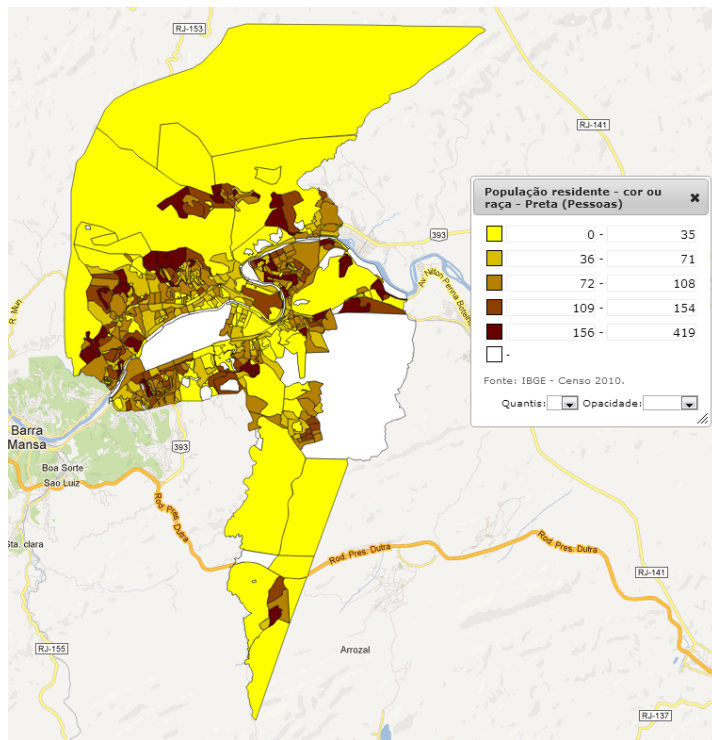
1. Enumeration area



1. Enumeration area

- Dissemination
 - 2010 Census
 - SIG IBGE / 2010 Census
 - Statcart

1. Enumeration area



- UF: Rio de Janeiro
- Município: Volta Redonda
- Bairro: Jardim Amália

MENU

- Distrito ou subdistrito: VOLTA REDONDA
- Setor: 330630505000456

UF	Município	Distrito	Bairro	Setor	Pirâmides etárias	Dados adicionais
					População	Razão de sexo
						Densidade demográfica (habitante/Km2)
UF	Rio de Janeiro				15989929	91.17
Município	Volta Redonda				257803	91.13
Distrito	VOLTA REDONDA				257803	91.13
Bairro	Jardim Amália				8714	90.22
Setor	330630505000456				1374	91.9
						2085.69*

* Densidade demográfica preliminar

Descrição do setor
ENCONTRO DA RUA E COM A RUA O DO PONTO INICIAL SEGUINDO PELA RUA O ATÉ A RUA JORGE GONÇAVES PEREIRA DAI ATÉ SEU FINAL DAI CONTORNANDO A RUA SALVADOR DE SÁ (EXCLUÍDA) DAI ATÉ A RUA 1 (AMBOS OS LADOS) DAI CONTORNANDO A RUA H (AMBOS OS LADOS), RUA Y (AMBOS OS LADOS) ATÉ RUA F DAI ATÉ RUA Q DAI ATÉ RUA E DAI ATÉ O PONTO INICIAL.

Dados detalhados do setor

[Download de dados da Sinopse por setor](#)

Legenda

Sinopse do Censo 2010 - Razão de Sexo

0 -	84.58
84.6 -	89.35
89.39 -	93.81
93.85 -	98.52
98.58 -	6800
-	Ausência de valor

OK

2. Weighting areas

Criteria for aggregation

1. **Size**
To provide estimates with statistical quality in small areas
2. **Contiguity**
Constituted by geographically adjacent enumeration areas

2. Weighting areas

Possible scenarios

- The smallest weighting area must have 400 occupied private households in the survey sample
- The highest geographic level is the city
- Weighting areas with municipal planning agencies (more than 190.000 residents – 140 municipalities)
- Noncontiguous administrative divisions (Ex: urban enumeration area X rural enumeration area)

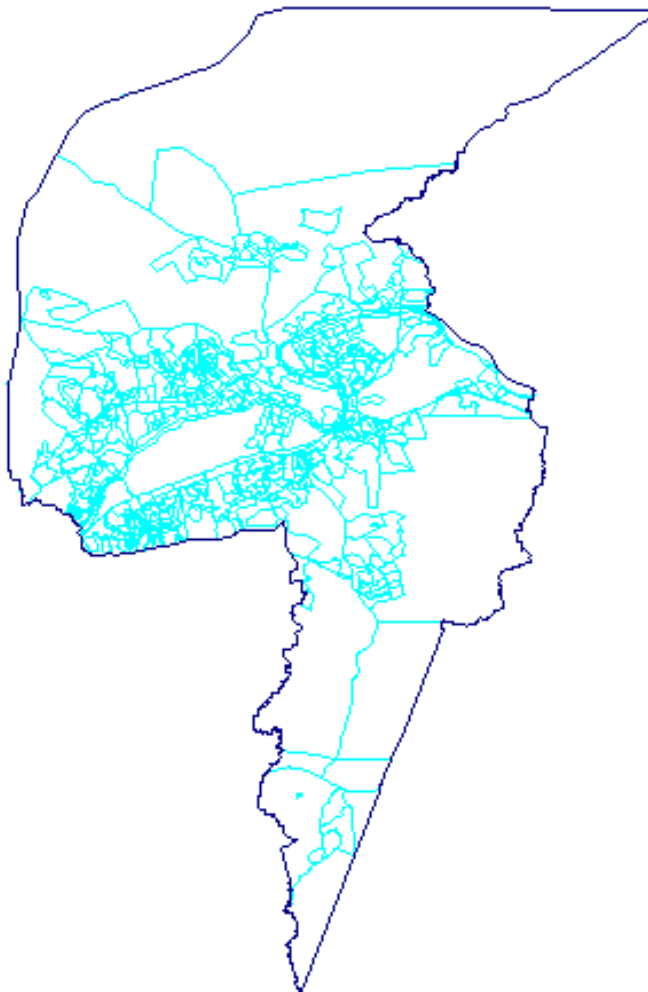
2. Weighting areas

Total

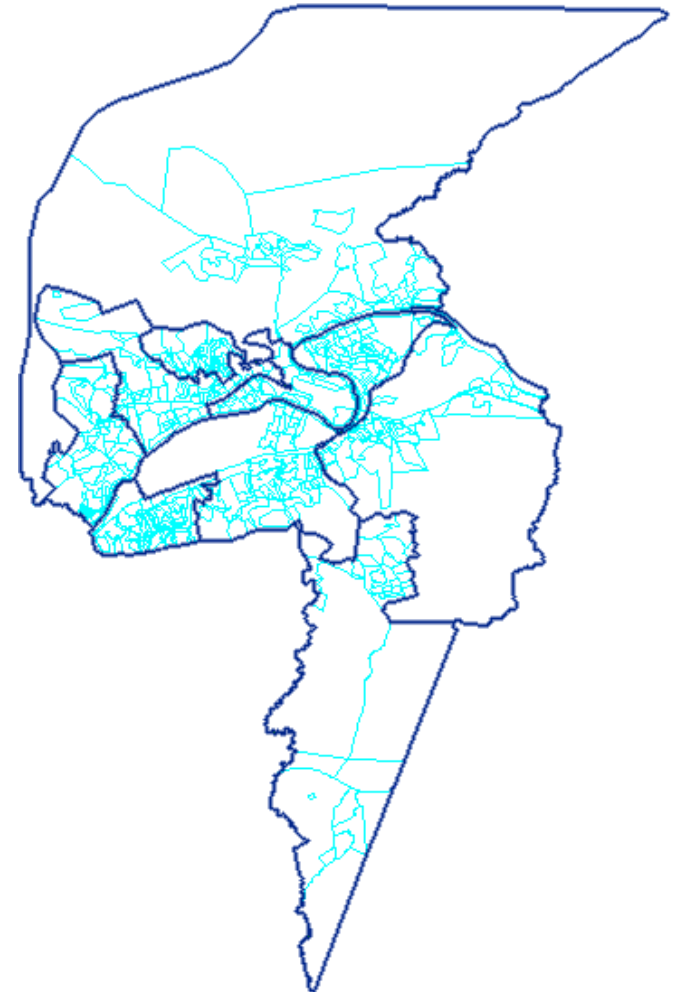
- 4524 – Municipality = weighting area
- 1041 – Municipality divided in more than one weighting area
 - 5660 weighting areas

Example: Volta Redonda

Enumeration areas



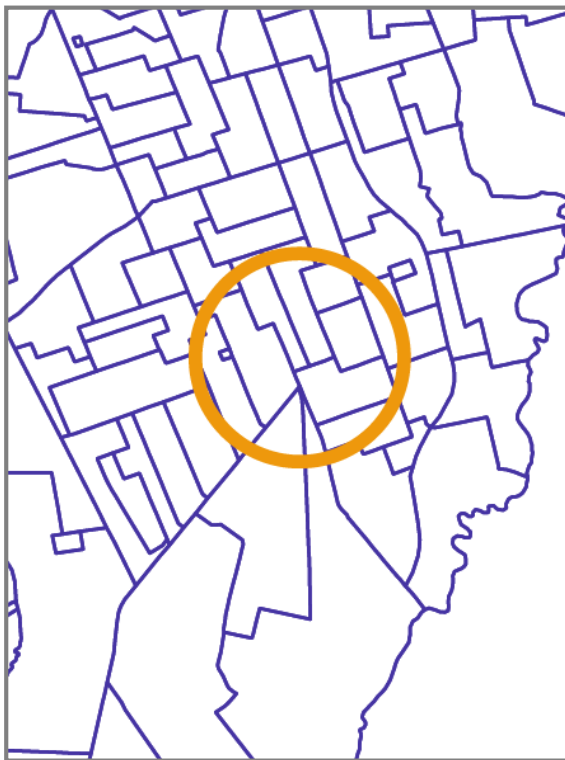
Weighting areas



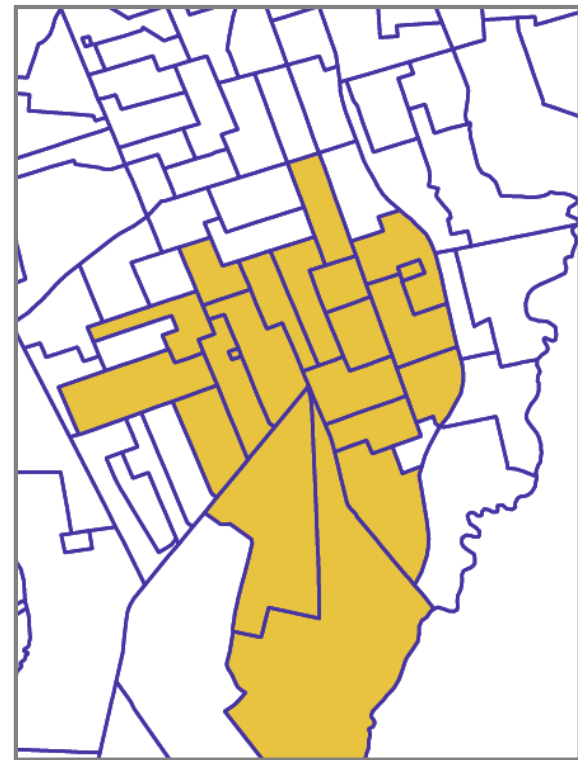
3. Block-face

Query by selected area

Previous situation: enumeration area as the smallest spatial unit



area of interest



intersection result

3. Block-face

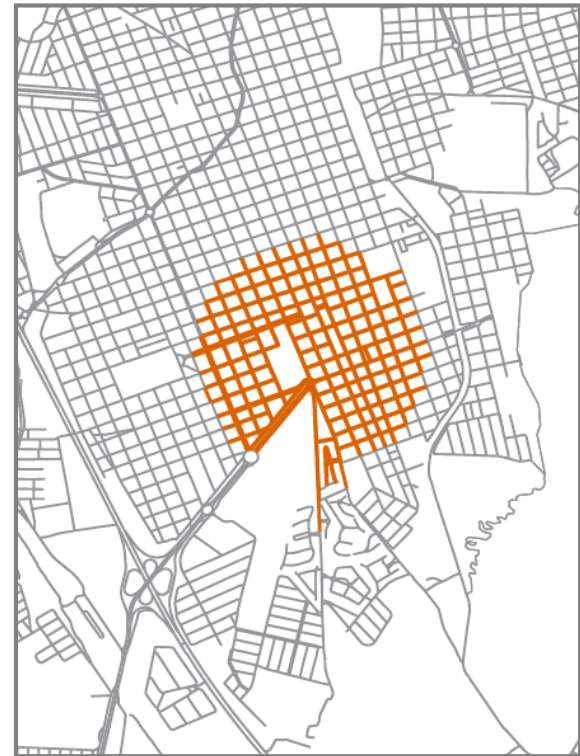
Query by selected area

Block-face as the smallest spatial unit

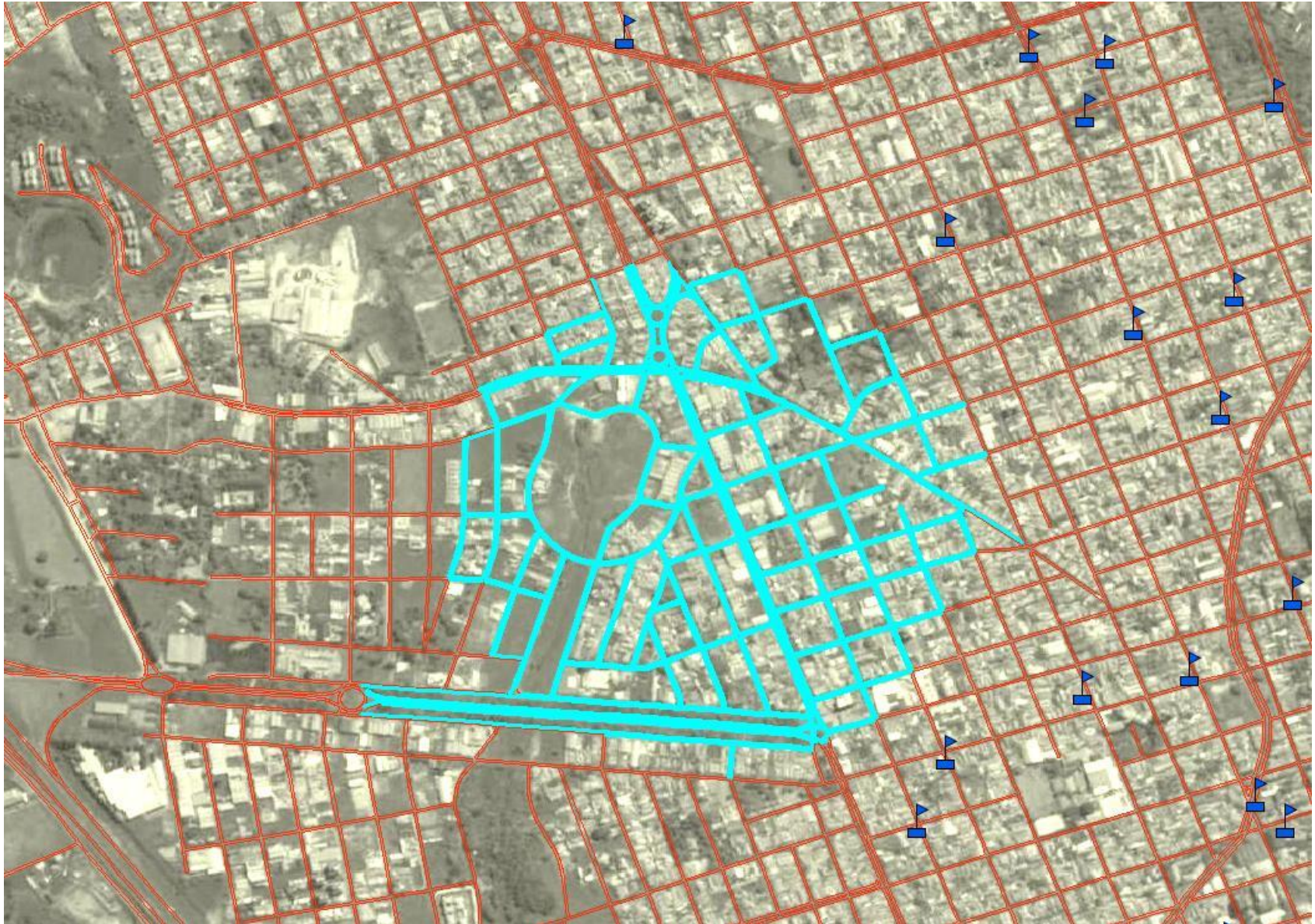
- confidentiality is maintained

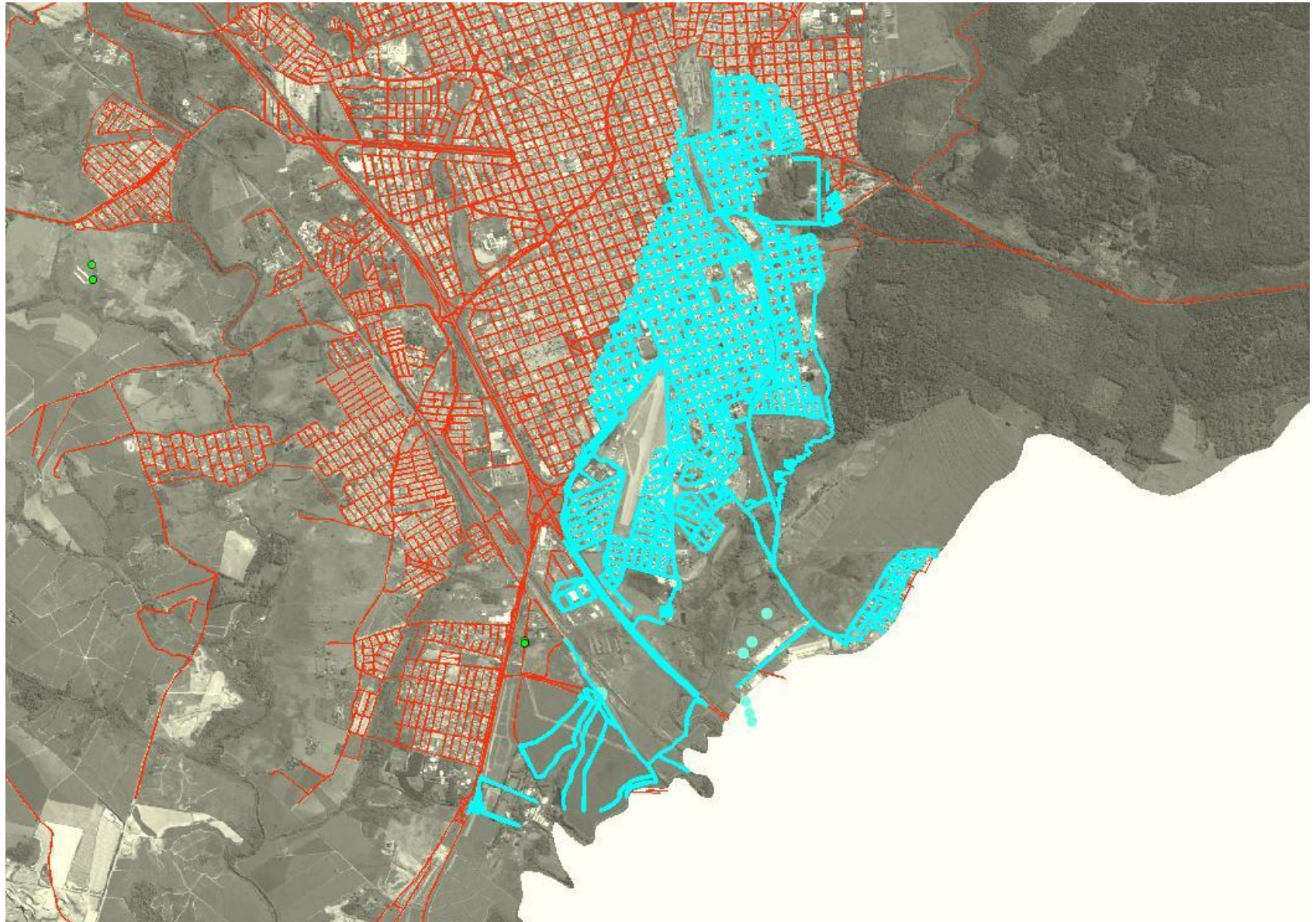


area of interest



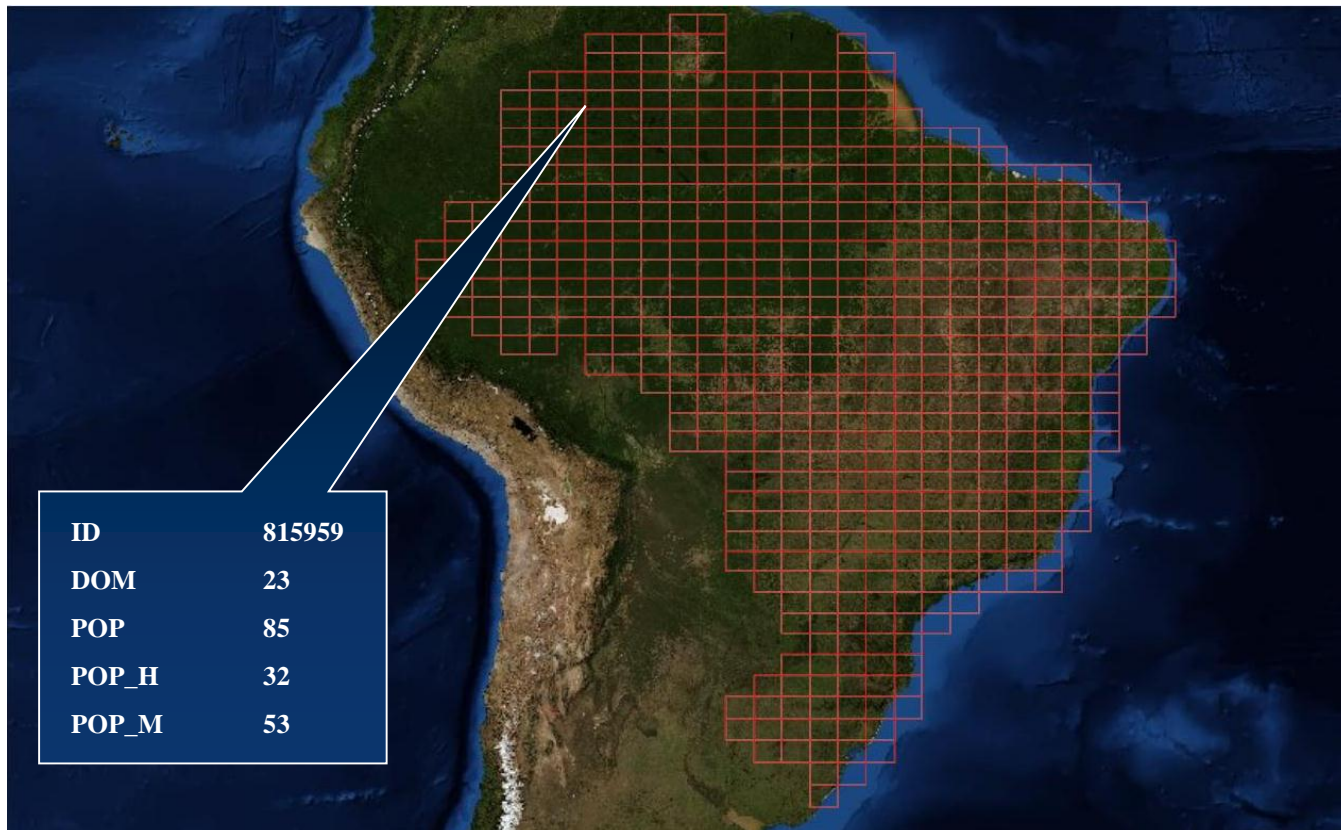
intersection result





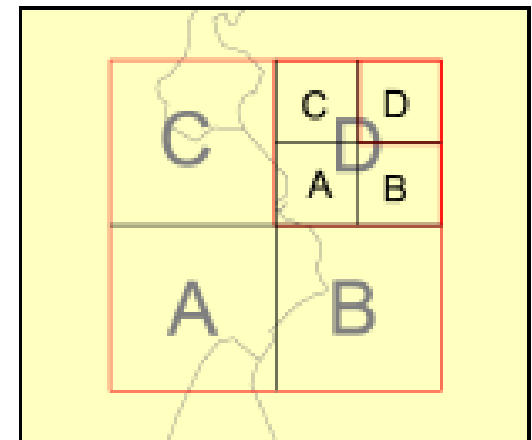
4. Statistical grids

- hierarchical spatial structures formed by regular cells and used to make aggregate data available



4. Statistical grids

- independence from political-administrative boundaries
→ direct comparability
- no change over time
→ direct comparability
- hierarchical structure
→ allows multi-scale analyses
- easily handled with GIS tools
- vector or raster data structure



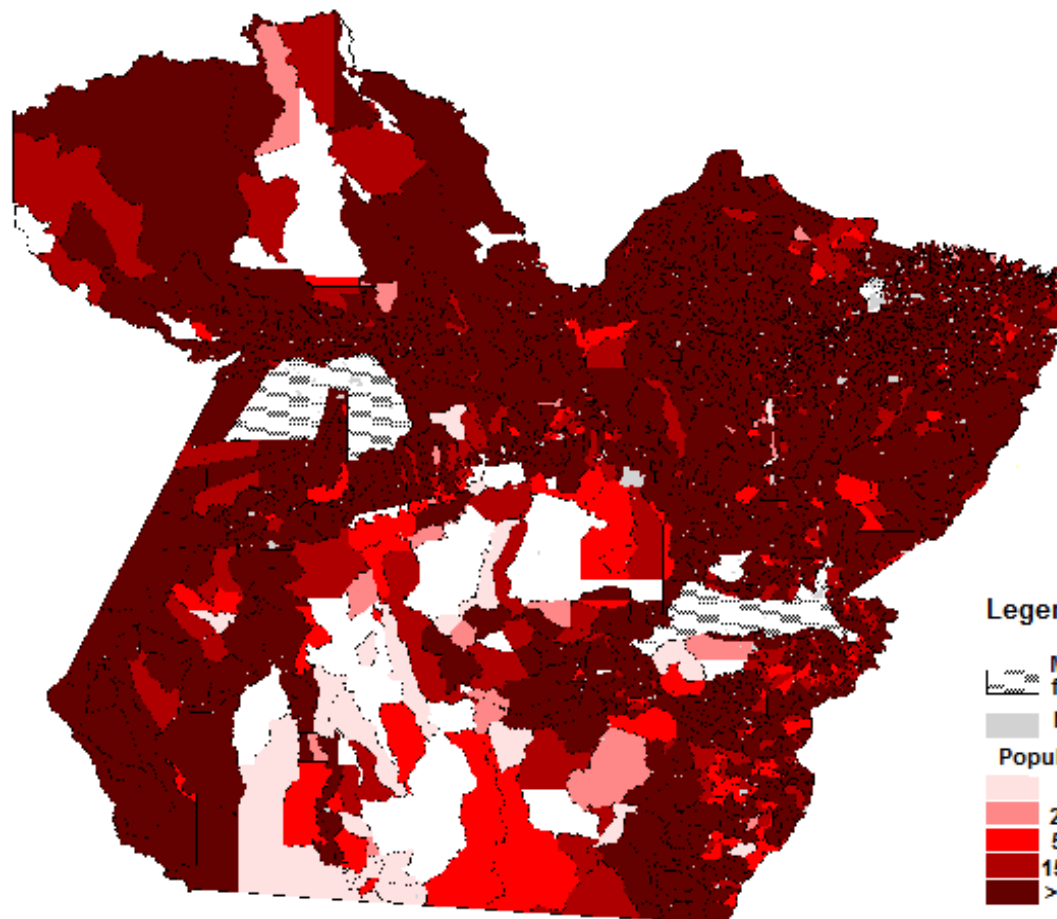
4. Statistical grids

Case study:

- publicly available data from the 2007 Counting
- permanent private housing units (occupied and closed) in areas classified as rural - type 8
- population density obtained from the average number of residents per housing unit in the enumeration area
- 1'15" x 1'15" ~ 2.3 Km → 1:4,000 scale
- Case - Para

PARÁ

Enumeration Areas



Legend

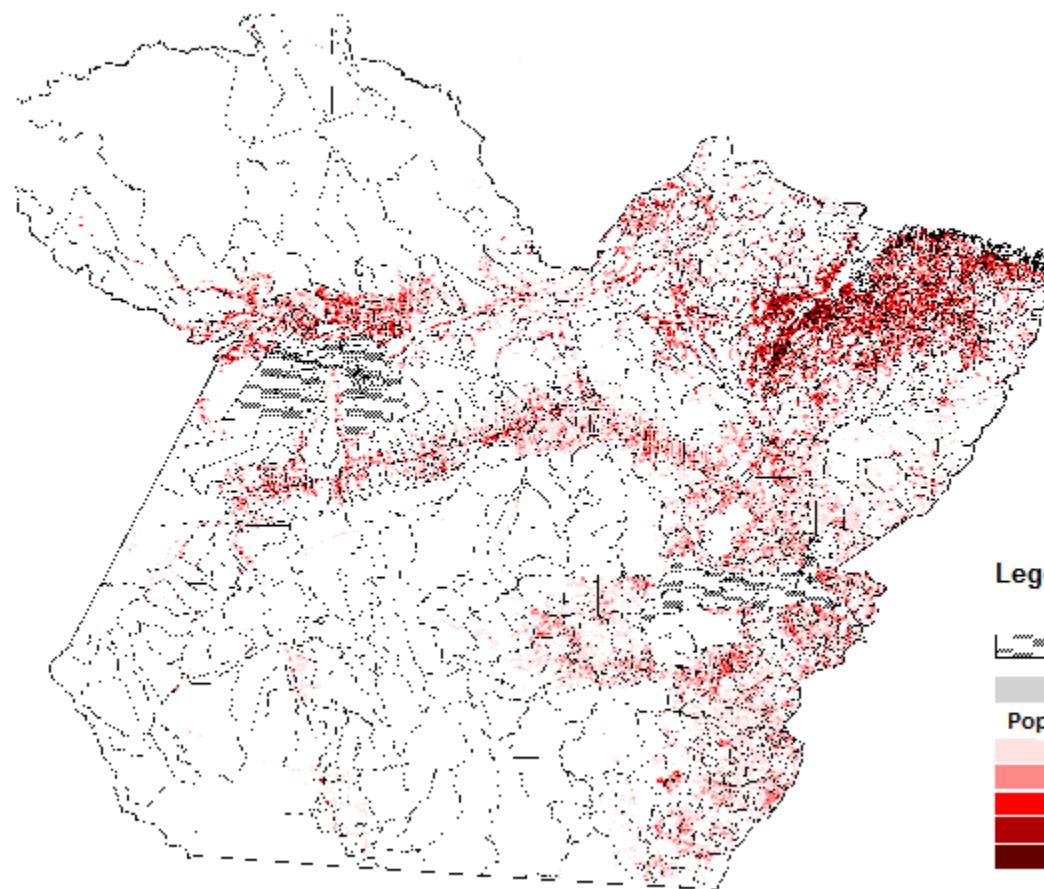
Municipalities excluded from the 2007 Counting

Non rural area type 8



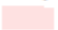




Population

- 1 - 20
- 20 - 50
- 50 - 150
- 150 - 300
- > 300

PARÁ
Cells of 1 min and 15 sec



Legend

-  Municipalities excluded from the 2007 Counting
-  Non rural area type 8
- Population**
-  1 - 20
-  20 - 50
-  50 - 150
-  150 - 300
-  > 300



***A Proposal for a Digital
Map Collection:
Find, Visualize, Create and Share***

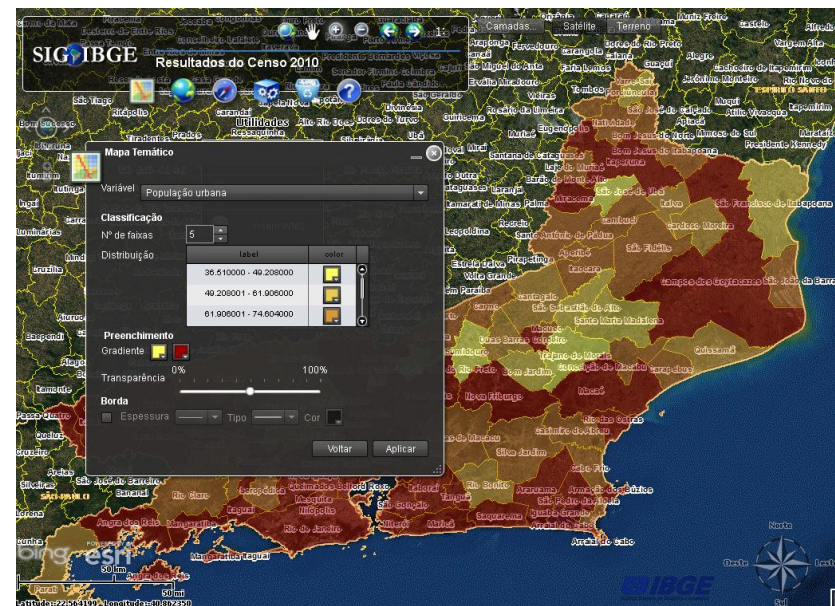
Introduction

Current context:

- Many entrances for maps through different channels
- Map channels aggregating maps in a number of formats (PDF, JPG, KML, WMS,...)
- Interactive map products

Interactive map products

The map server of IBGE: **SIG IBGE / SIG IBGE 2010 Census**



Interactive map products

SIG IBGE / SIG IBGE 2010 Census

- Developed in Flex technology
- Features:
 - To help reading data
 - To analyze and create maps
 - To export maps

Challenges

- 1. How can we improve access to map information?**
- 2. How can we improve information visualization of IBGE interactive tools?**
- 3. How can we motivate the production of information with IBGE maps?**

Goal 1: To improve access to map information

Proposals

1. Expanding hierarchical navigation through more data facets > Overview of the portal's content
 - **Theme**
 - Sub-theme
 - Sub-sub-theme
 - **Publications**
 - Chapters
 - Sections
 - **Geographic area**
 - Sub-area
 - Sub-sub-area
 - **Title**
 - **File Type**

Example:

Com miniaturas Comparar

Exibir por:

Título Temas Publicação Tipo do arquivo

Brasil

- Biomas (arctgis)
- Carta ao Milionésimo (arctgis)
- Climax (arctgis)
- Divisão político-administrativa 2010 (arctgis)
- Fauna Ameaçada de Extinção (arctgis)
- Geologia (arctgis)
- Localidades (e Densidades) 2010 (arctgis)
- Mapa físico - Região Centro-Oeste (Pdf)
- Mapa físico - Região Nordeste (Pdf)
- Mapa físico - Região Sudeste (Pdf)
- Mapa físico - Região Sul (Pdf)
- Mapa físico- Região Norte (Pdf)
- Mosaico (do Mapeamento Brasileiro) de folhas topográficas (arctgis)
- Potencial Agrícola (arctgis)

Brasil



Biomas (arctgis)



Imagem não cadastrada

Capitanias hereditárias (Gif)



Carta ao Milionésimo (arctgis)

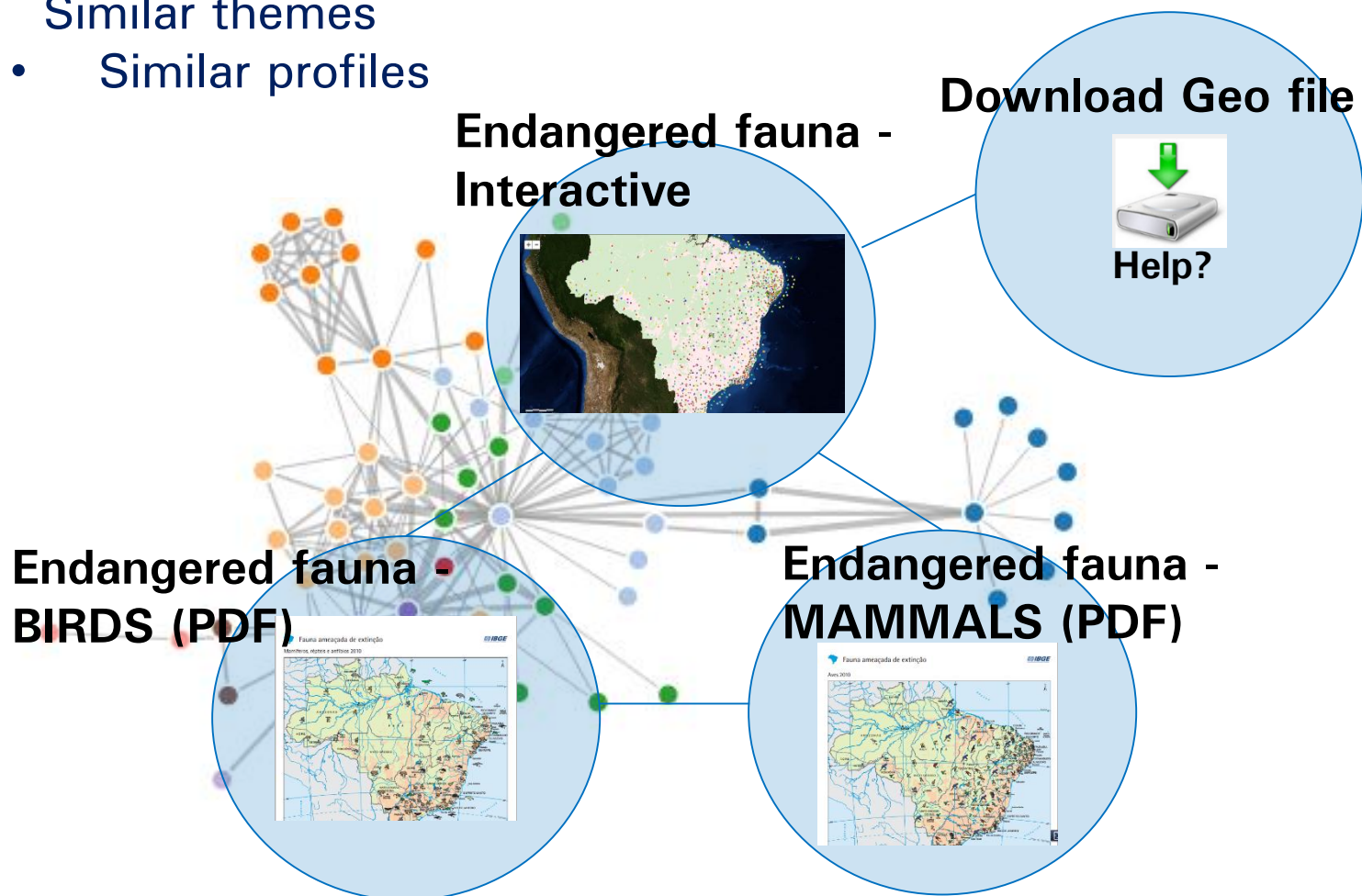
Proposals

2. Search in the set of geospatial metadata (FGDC) through the inclusion of keyword search
 - Title
 - Subtitle
 - Summary
 - Tags

Proposals

3. Through recommendations

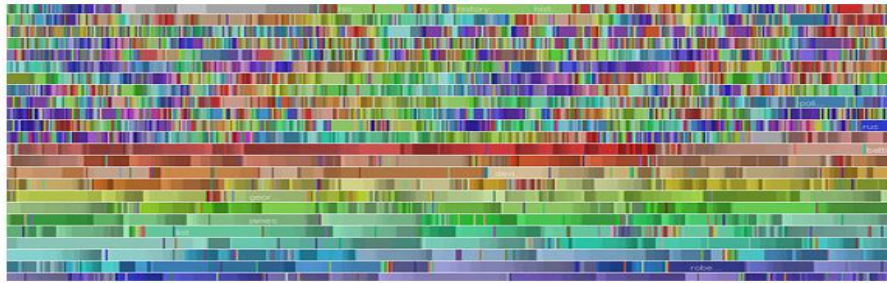
- Similar themes
 - Similar profiles



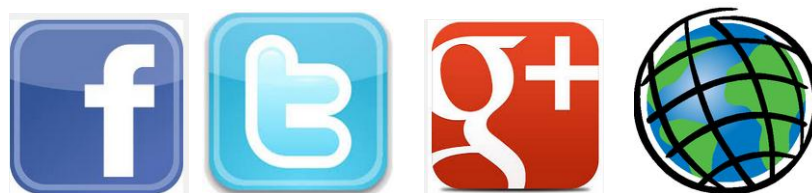
Proposals

4. To get to know our users

- Recording usage logs – **Big data**



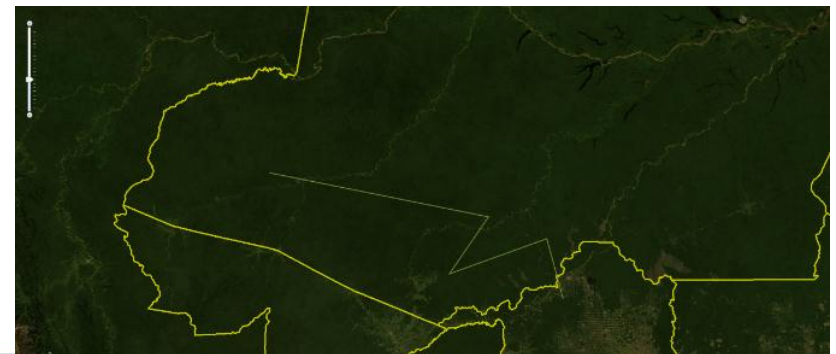
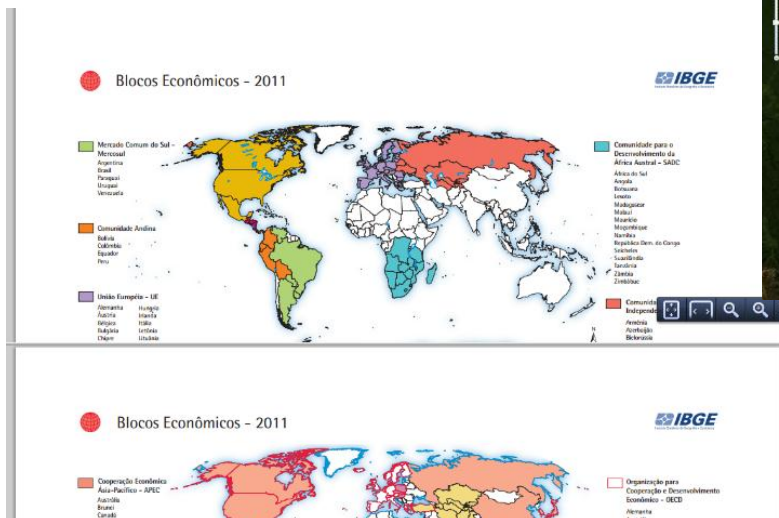
- Motivating users to create an account and **personalize** content
- Allowing information sharing in social networks



Goal 2: To improve information visualization

Proposals

1. New features to facilitate map interpretation and analysis
 - Allowing side-by-side comparison
 - Allowing map overlay
 - Improving visual feedback to the user
 - Including task-based interactive features

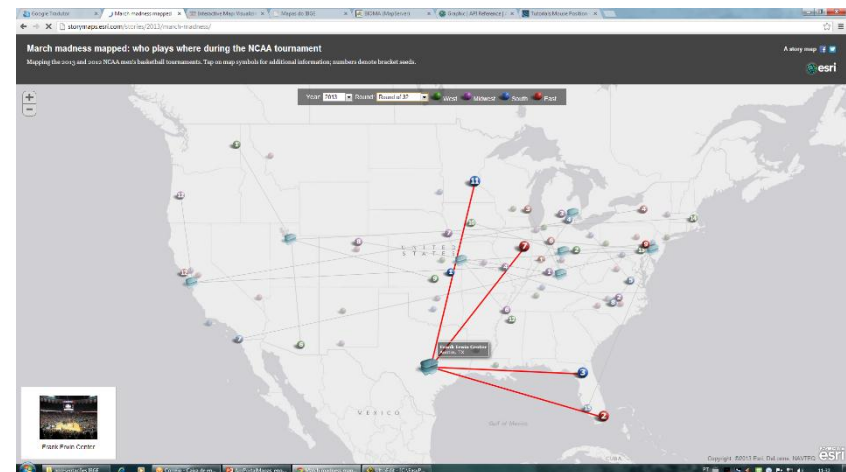
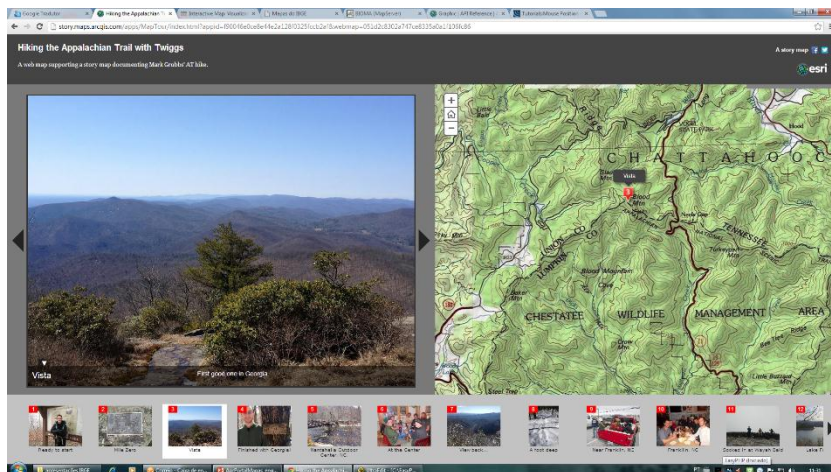


Proposals

2. Relevance **feedback** mechanism

- Explicit
User classification
- Implicit
Analysis of Big Data

3. Make it memorable through **storytelling** maps (future)



Goal 3 - To motivate the production of information Proposals

To expert users:

1. Improving **interoperability** between visualization systems using OGC standard services
 - WMS
 - WFS
 - WTMS

To novice users:

2. Allowing the importation of common file formats



Proposals

2. Allowing information sharing



Interface

Visualizing PDF files

The screenshot displays the IBGE Maps Portal interface. The main content area shows a climate map of Brazil, titled "Clima", with a legend on the right. The legend is organized into four categories:

- Quente (média > 18° C em todos os meses do ano)**:
 - Superúmido sem seca/subseca
 - Úmido com 1 a 3 meses secos
 - Semi-úmido com 4 a 5 meses secos
 - Semi-árido com 6 a 8 meses secos
 - Semi-árido com 9 a 11 meses secos
- Subquente (média entre 15° C e 18° C em pelo menos 1 mês)**:
 - Superúmido sem seca/subseca
 - Úmido com 1 a 3 meses secos
 - Semi-úmido com 4 a 5 meses secos
- Mesotérmico Brando (média entre 10° C e 15° C)**:
 - Superúmido sem seca/subseca
 - Úmido com 1 a 3 meses secos
 - Semi-úmido com 4 a 5 meses secos
- Mesotérmico Mediano (média < 10° C)**:
 - Úmido com 1 a 3 meses secos

Below the legend is a section for "Climas zonais" with a small map of Brazil showing three zones: Equatorial, Tropical Zona Equatorial, and Tropical Nordeste Oriental.

The left sidebar contains a search bar and a list of metadata for the selected map "Climas":

- Exibir por: Título Temas Publicação Tipo do arquivo
- Visualizar títulos com miniaturas
- Blocos econômicos (Pdf)
- Café (Pdf)
- Capitanias hereditárias (Gif)
- Carta ao Milionésimo (arcgis)
- Climas (arcgis)
- Climas (Pdf)
- Informações sobre o mapa:
 - id: 31
 - título: Climas
 - tipo: Pdf
 - publicação: Atlas Escolar
 - tags: Brasil, clima, umidade, chuvas, temperatura, vento, calor
 - tema: Brasil
 - subtema: Diversidade Ambiental
 - link: <http://atlascolar.ibge.gov.br/images/atlas/ma>
 - miniatura: [images/nao_cadastrada.jpg](#)
- Crianças abaixo do peso (Pdf)
- Culturas permanentes - Banana, Laranja, Maçã, Mamão, Manga, Tangerina, Uva, Coco (Pdf)
- Culturas temporárias - Cana-de-açúcar, Milho, Trigo, Feijão, Arroz, Tomate, Madioca, Batata (Pdf)
- Densidade demográfica - Idosos (Pdf)
- Densidade demográfica (Pdf)
- Densidade demográfica no mundo (Pdf)
- Densidade demográfica por países (Pdf)
- Distribuição da população e analfabetismo por cor e raça (Pdf)
- Distribuição da população e situação de domicílio (Pdf)
- Distribuição da soja em diferentes domínios ?toecológicos (Pdf)
- Distribuição de Recursos Hídricos (Pdf)
- Divisão dos continentes e Países mais extensos (Pdf)

At the bottom, there is a "Atalho para os mapas visitados" section with a list of visited maps and their visit counts:

- Climas (Pdf) 1x
- Acesso à rede sanitária (Pdf) 1x
- Acesso ao serviço de água (Pdf) 2x
- Distribuição da população e situação de domicílio (Pdf) 1x
- Mapa político do Acre (Pdf) 1x
- Mapa político do Ceará (Pdf) 1x
- Mapa político do Distrito Federal (Pdf) 2x
- Mapa político do Mato Grosso (Pdf) 1x

The taskbar at the bottom shows the Windows operating system with various open applications like "jqery.treeview", "Correio - Caixa de en...", "Mapas do IBGE - Go...", "AprCDDÉ [Modo de ...", "AprMapasInterativos...", "UltraEdit - [C:\EasyP...", "SQLyog Community ...", and "Sem Título-1 @ 100...".

Interface

Visualizing interactive maps

The screenshot displays the IBGE interactive map interface. The main map shows a geological map of the Amazon region, overlaid on a satellite base map. The map is color-coded according to geological eras and periods. A legend on the right side of the map provides a key for these colors, including categories like 'Arqueano', 'Arqueano Mesoarqueana', 'Arqueano Neoarqueana', and various 'Fanerozoico' periods. The interface includes a search bar at the top, a sidebar on the left with a list of related maps and metadata, and a bottom navigation bar with buttons for 'Descartar atalhos' and 'Salvar atalhos'.

Amazônia Legal - Geologia
 Mapeamento do tema Geologia para a Amazônia Legal brasileira.

Camadas

- GEOLOGIA
- BASE CARTOGRÁFICA

Legenda

Limite Estadual

Capital

Massa d'água

GEOLOGIA

- Arqueano
- Arqueano Mesoarqueana
- Arqueano Neoarqueana
- Fanerozoico Cenozoica Neógeno Holoceno
- Fanerozoico Cenozoica Neógeno Mioceno Langhiano
- Fanerozoico Cenozoica Neógeno Pleistoceno
- Fanerozoico Cenozoica Neógeno Plioceno
- Fanerozoico Cenozoica Paleógeno Oligoceno
- Fanerozoico Cenozoica Paleógeno Oligoceno Chattiano
- Fanerozoico Cenozoica Quaternário Holoceno
- Fanerozoico Cenozoica Quaternário Pleistoceno
- Fanerozoico Mesozoica Cretáceo
- Fanerozoico Mesozoica Cretáceo Inferior

Amazônia Legal - Geologia (arcgis)

Informações sobre o mapa
 publicação: SIGIBGE

tags: Amazônia Legal, geologia, rochas, arcabouço geológico, estrutura geológica

tema: Brasil

subtema: Amazônia Legal

link: arcgis.htm?id=27d67777c60d4cab8400867b9a

miniatura: <http://ibge.maps.arcgis.com/sharing/content/it/>

capítulo: secado, secoa, area, Brasil

Amazônia Legal - Geomorfologia (arcgis)

Amazônia Legal - Pedologia (arcgis)

Amazônia Legal - Vegetação (arcgis)

Amazônia Legal (arcgis)

América do Sul (Pdf)

Assentamentos rurais (Pdf)

Bens duráveis e serviços - Televisão, Geladeira, Microcomputador, Freezer, Máquina de lavar, Energia elétrica (Pdf)

Atalho para os mapas visitados

Amazônia Legal - Geologia (arcgis) 1x

Descartar atalhos Salvar atalhos

Mapas relacionados

Não existem recomendações

Conclusions

The new proposal aims at covering characteristics from the following applications:

- Portal
- Social network
- Visualization tool

Thank you!

Taissa Abdalla Filgueiras de Sousa
COPES/CDDI
taissa.sousa@ibge.gov.br



Instituto Brasileiro de Geografia e Estatística

www.ibge.gov.br